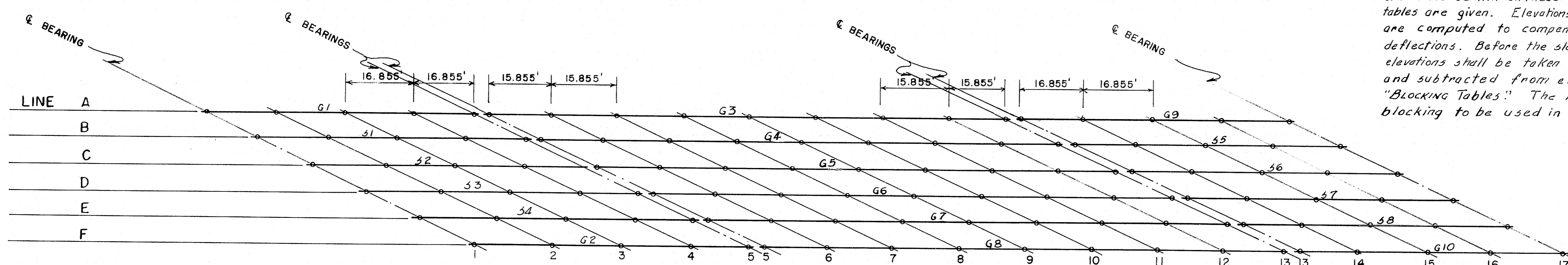


BLOCKING TABLE																	
SPAN 1					SPAN 2							SPAN 3					
	1	2	3	4	5	6	7	8	9	10	11	12	13	14	15	16	17
A	84.79 <sup>.00</sup>	85.01 <sup>.04</sup>	85.18 <sup>.05</sup>	85.32 <sup>.04</sup>	85.42 <sup>.00</sup>	85.64 <sup>.08</sup>	85.87 <sup>.14</sup>	86.06 <sup>.18</sup>	86.17 <sup>.19</sup>	86.20 <sup>.18</sup>	86.16 <sup>.14</sup>	86.03 <sup>.08</sup>	86.01 <sup>.00</sup>	86.07 <sup>.04</sup>	86.09 <sup>.05</sup>	86.07 <sup>.04</sup>	86.01 <sup>.00</sup>
B	85.06 <sup>.00</sup>	85.28 <sup>.06</sup>	85.46 <sup>.08</sup>	85.58 <sup>.06</sup>	85.64 <sup>.00</sup>	85.86 <sup>.07</sup>	86.05 <sup>.12</sup>	86.22 <sup>.15</sup>	86.32 <sup>.14</sup>	86.35 <sup>.15</sup>	86.30 <sup>.12</sup>	86.23 <sup>.09</sup>	86.21 <sup>.00</sup>	86.06 <sup>.06</sup>	86.08 <sup>.08</sup>	86.20 <sup>.06</sup>	86.11 <sup>.00</sup>
C	85.32 <sup>.00</sup>	85.48 <sup>.04</sup>	85.70 <sup>.08</sup>	85.81 <sup>.06</sup>	85.86 <sup>.00</sup>	86.05 <sup>.07</sup>	86.25 <sup>.12</sup>	86.41 <sup>.15</sup>	86.50 <sup>.16</sup>	86.52 <sup>.15</sup>	86.46 <sup>.12</sup>	86.37 <sup>.07</sup>	86.30 <sup>.00</sup>	86.23 <sup>.06</sup>	86.24 <sup>.08</sup>	86.20 <sup>.06</sup>	86.11 <sup>.00</sup>
D	85.44 <sup>.00</sup>	85.64 <sup>.06</sup>	85.80 <sup>.08</sup>	85.90 <sup>.06</sup>	85.94 <sup>.00</sup>	86.32 <sup>.07</sup>	86.51 <sup>.12</sup>	86.46 <sup>.15</sup>	86.57 <sup>.16</sup>	86.55 <sup>.15</sup>	86.48 <sup>.12</sup>	86.39 <sup>.07</sup>	86.30 <sup>.00</sup>	86.26 <sup>.06</sup>	86.28 <sup>.08</sup>	86.20 <sup>.06</sup>	86.11 <sup>.00</sup>
E	85.43 <sup>.00</sup>	85.62 <sup>.06</sup>	85.77 <sup>.08</sup>	85.86 <sup>.06</sup>	85.89 <sup>.00</sup>	86.05 <sup>.07</sup>	86.23 <sup>.12</sup>	86.37 <sup>.15</sup>	86.44 <sup>.16</sup>	86.45 <sup>.15</sup>	86.36 <sup>.12</sup>	86.26 <sup>.07</sup>	86.30 <sup>.00</sup>	86.25 <sup>.06</sup>	86.24 <sup>.08</sup>	86.28 <sup>.06</sup>	86.17 <sup>.00</sup>
F	85.40 <sup>.00</sup>	85.56 <sup>.04</sup>	85.68 <sup>.05</sup>	85.77 <sup>.04</sup>	85.82 <sup>.00</sup>	85.99 <sup>.07</sup>	86.16 <sup>.14</sup>	86.30 <sup>.16</sup>	86.36 <sup>.19</sup>	86.35 <sup>.18</sup>	86.26 <sup>.14</sup>	86.18 <sup>.09</sup>	86.16 <sup>.00</sup>	86.20 <sup>.06</sup>	86.18 <sup>.08</sup>	86.11 <sup>.06</sup>	85.99 <sup>.00</sup>

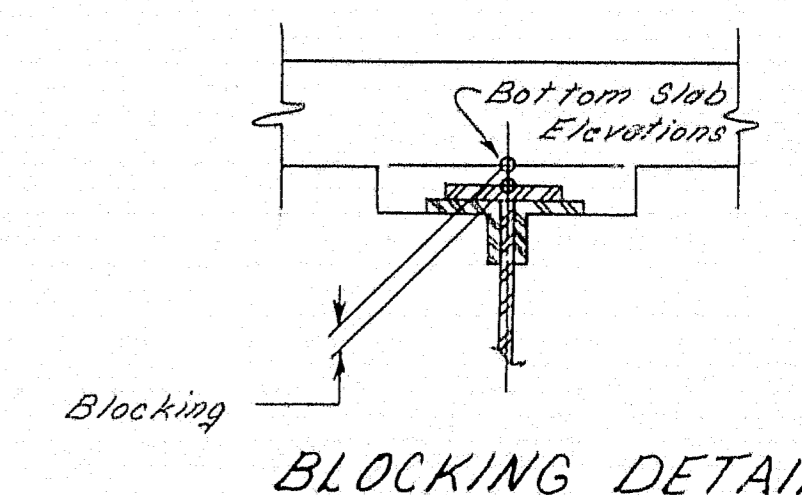
### SOUTH BOUND



BLOCKING TABLE																	
SPAN 1					SPAN 2							SPAN 3					
LINE	1	2	3	4	5	6	7	8	9	10	11	12	13	14	15	16	17
A	85.78 <sup>00</sup>	85.90 <sup>04</sup>	85.97 <sup>03</sup>	86.01 <sup>04</sup>	86.01 <sup>00</sup>	86.13 <sup>08</sup>	86.26 <sup>14</sup>	86.35 <sup>18</sup>	86.37 <sup>19</sup>	86.38 <sup>18</sup>	86.17 <sup>14</sup>	86.00 <sup>08</sup>	85.83 <sup>00</sup>	85.79 <sup>04</sup>	85.71 <sup>03</sup>	85.59 <sup>04</sup>	85.43 <sup>01</sup>
B	85.97 <sup>00</sup>	86.10 <sup>04</sup>	86.17 <sup>08</sup>	86.19 <sup>06</sup>	86.16 <sup>00</sup>	86.26 <sup>07</sup>	86.37 <sup>12</sup>	86.44 <sup>15</sup>	86.45 <sup>16</sup>	86.38 <sup>15</sup>	86.24 <sup>18</sup>	86.07 <sup>07</sup>	85.91 <sup>00</sup>	85.87 <sup>06</sup>	85.78 <sup>08</sup>	85.65 <sup>06</sup>	85.45 <sup>01</sup>
C	86.15 <sup>00</sup>	86.25 <sup>06</sup>	86.33 <sup>08</sup>	86.34 <sup>06</sup>	86.30 <sup>00</sup>	86.37 <sup>07</sup>	86.47 <sup>12</sup>	86.55 <sup>15</sup>	86.55 <sup>16</sup>	86.47 <sup>15</sup>	86.32 <sup>18</sup>	86.14 <sup>07</sup>	85.97 <sup>00</sup>	85.87 <sup>06</sup>	85.78 <sup>08</sup>	85.65 <sup>06</sup>	85.39 <sup>01</sup>
D	86.20 <sup>00</sup>	86.30 <sup>06</sup>	86.35 <sup>08</sup>	86.36 <sup>06</sup>	86.30 <sup>00</sup>	86.38 <sup>07</sup>	86.47 <sup>12</sup>	86.52 <sup>15</sup>	86.51 <sup>18</sup>	86.42 <sup>18</sup>	86.26 <sup>12</sup>	86.07 <sup>07</sup>	85.97 <sup>00</sup>	85.83 <sup>06</sup>	85.73 <sup>08</sup>	85.57 <sup>06</sup>	85.35 <sup>01</sup>
E	86.10 <sup>00</sup>	86.20 <sup>06</sup>	86.24 <sup>08</sup>	86.23 <sup>06</sup>	86.17 <sup>00</sup>	86.29 <sup>07</sup>	86.32 <sup>12</sup>	86.37 <sup>15</sup>	86.34 <sup>16</sup>	86.29 <sup>15</sup>	86.18 <sup>18</sup>	86.07 <sup>07</sup>	85.87 <sup>00</sup>	85.81 <sup>06</sup>	85.70 <sup>08</sup>	85.52 <sup>06</sup>	85.10 <sup>01</sup>
F	86.00 <sup>00</sup>	86.07 <sup>04</sup>	86.09 <sup>03</sup>	86.08 <sup>04</sup>	86.02 <sup>00</sup>	86.10 <sup>08</sup>	86.18 <sup>14</sup>	86.22 <sup>18</sup>	86.23 <sup>19</sup>	86.19 <sup>18</sup>	86.08 <sup>14</sup>	85.87 <sup>07</sup>	85.67 <sup>00</sup>	85.61 <sup>06</sup>	85.49 <sup>08</sup>	85.32 <sup>06</sup>	84.83 <sup>01</sup>

### NORTH BOUND

NOTE  
Tabular Elevation less figure in corner = final elevation of bottom of slab.



Blocking Table Span 2  
South Bound Revised 5-23-62

### BLOCKING NOTES

In order for the roadway slab to conform to the profile and cross section on these plans, the accompanying tables are given. Elevations for the bottom of slab are computed to compensate for the dead load deflections. Before the slab forms are constructed, elevations shall be taken at the points indicated and subtracted from elevations shown in the "Blocking Tables." The result is the actual blocking to be used in the form work.

In Spans 1 & 3 the 1/4 point spacing is 16.855  
In Span 2 the 1/8 point spacing is 15.855

DESIGN - J.M. - R.M. TRACE - L.M. CHECK - C.D.H. - W.B.	BRIDGE NO. SURVEY PLOT
STATE HIGHWAY COMMISSION BRIDGE DIVISION	
INTERSTATE OVER ROUTE 1	
YARMOUTH CUMBERLAND COUNTY	
BLOCKING DETAIL	
SHEET	OF AUGUSTA, MAINE

Blocking Table Span 2  
South Bound Revised 5-23-62  
Blocking Table Span 3  
North Bound Revised 5-23-62